

EX1401 Quick Start Guide



82-0156-100 Rev A

Manual and driver available on DVD or at www.vtiinstruments.com.

1. Unpack Box

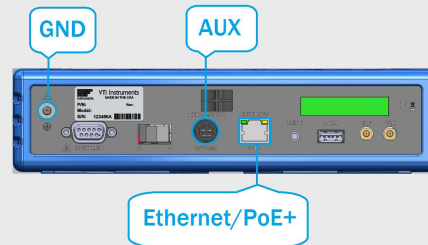
Open and unpack the box of the EX1401.

The following items should be inside:

- EX1401 (70-0626-000)
- Quick Start Guide (This Document)
- VTI CD/DVD (72-0030-000)
- AUX Power Adaptor (56-0739-000)
- GND Cable (53-0070-072)

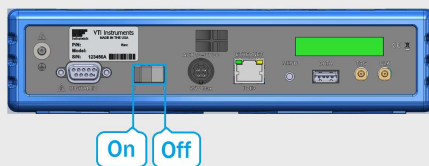
2. Connect to Power

Connect the Ethernet cable to the back of the EX1401. If your Ethernet switch is not PoE+, also connect the AUX power cord. Connect the GND cable from the unit to Earth GND.



3. Power On

Locate the power switch of the EX1401. Turn it on.



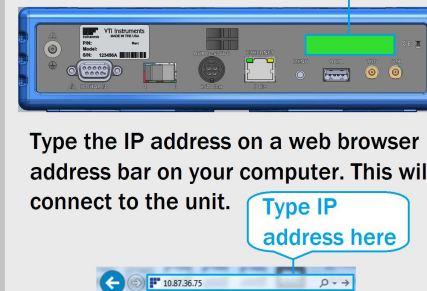
4. Insert Thermocouple

Apply a thermocouple (TC) or voltage signal using a mini TC plug to the front of the EX1401.



5. Connect to WebSFP

Wait for the unit to fully boot. Then, locate the IP address of the unit on the LCD.



Type the IP address on a web browser address bar on your computer. This will connect to the unit.

6. Acquire Data

1. Select the correct channel(s)
2. Select the function type
3. Select the correct TC type for temperature
4. Set sample rate
5. Click Initiate Measurement
6. Wait for the State box to change from Measuring to Idle
7. Choose Download Records From FIFO from the dropdown menu under Plot Type
8. Click Plot Next FIFO Record

Enabled	Function	Range	TC Type	Downsampling	Sample Rate	Span
ALL	Temperatu	100mV	T	1	10000.0	4530.0
CH1	Temperatu	100mV	T			
CH2	Temperatu	100mV	T			

Select SFP Cards from the menu.



Click on **inst0**. The WebSFP should now open and should look like this:

Device	Model	Revision	Serial	Description	Resource
inst0	EX1401	1.12.2-90911-1128	111111	Isolated Thermocouple Measurement Instrument	TCPIP:10.87.37.18;inst0;INSTR

Data plotted here

